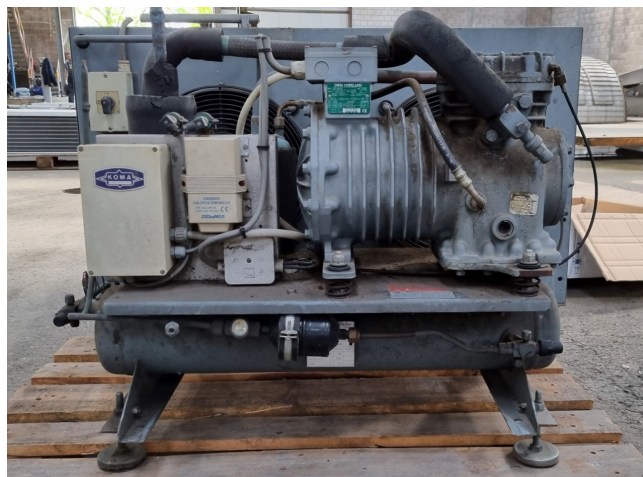


Copeland DLFP-20X-EWL Condensing unit

Specifications

Brand	Copeland
Type	DLFP-20X-EWL Condensing unit
Refrigerant	Freon
kW at -20°C/+40°C	4,0
kW at -30°C/+40°C	2,3
kW at -40°C/+40°C	1,0
Unloaded Start	✓
Liquid receiver	✓
Liquid receiver ltr.	14
Liquid line filter drier	✓
m3 / h	12,9
Condensing Unit	✓
Sizes	1110x840x700 mm (LxWxH)
Stock	1



Description

Used Copeland DLFP-20X-EWL Condensing unit

Used DWM Copeland condensing unit. Complete with a DWM Copeland DLFP-20X-EWL compressor, liquid receiver 14 liter and liquid line filter drier.

*Why choose for HOSBV? Were not only the largest used refrigeration specialist in Europe, but also, we deliver all equipment including an extensive test, warranty and industrial cleaning.

*If requested we are happy to arrange your shipment

